

# THE HEART OF OUR COMMUNITY

The Holdrege Area Public Library stands as a cornerstone of our community, and the place people come to experience the joy of reading, the exhilaration of discovering new ideas, and to be empowered with access to information of all types. Guided by community needs, we're proud to offer welcoming, convenient, and responsive services.

**OUR MISSION** is to be the heart of lifelong learning in our community—offering welcoming spaces where people experience the joy of reading, explore new ideas, and enjoy free access to knowledge and resources.



# BRIDGING GENERATIONS & BUILDING OUR FUTURE

The Holdrege Area Public Library serves about 9,000 residents across the city of Holdrege and Phelps County communities in south-central Nebraska, including roughly 5,500 living right here in Holdrege. Our community ranges from young families and students to farmers and retirees, reflecting Holdrege's impact as a hub for education, healthcare, agriculture, and small business.

With a collection of over 66,000 items and programs for all ages, we offer technology access, early literacy support, after-school and teen activities, and lifelong learning opportunities.

As the only full-service public library in Phelps County, we are proud to be a welcoming space for everyone and a resource that grows along with the needs of our community.



**IN  
2024**

**138,178**

WEBSITE &  
SOCIAL MEDIA  
REACH

**3,401**

YA & ADULTS  
SERVED IN 100+  
PROGRAMS

**49,465**

ITEMS BORROWED

**3,345**

PRE-K & K-4TH GRADE  
CHILDREN SERVED IN  
150+ CHILDREN'S  
PROGRAMS

**10,644**

ACTIVE CARD  
HOLDERS

**28,190**

VISITORS

**7,037**

COMPUTER  
SESSIONS

## **OUR COMMUNITY. OUR LEGACY.**

Our library is a lively gathering place for learning and connection, welcoming people of all ages and opening doors to worlds beyond our own.

The Holdrege Area Public Library is more than a place for books, it is the center for lifelong learning, connection, and opportunity in Phelps County.

Holdrege Area Public Library is a community center to explore programs and services that ignite curiosity and inspire growth.

---

Over the past two years, library program attendance has grown by more than 75% ...

---

This demonstrates an increased demand for educational, cultural, and recreational opportunities. The library serves all ages, from story times in the Children's Room that spark a love of reading, to Teen Science Cafés that connect local students with STEM experts, to lifelong learning workshops for adults and seniors. With updated technology and high-speed internet access, the library also bridges the digital divide for rural residents who may not otherwise have reliable access.

**To serve our community better and meet growing demand, we're launching a capital campaign to fund the construction of a new library.**

**THIS PROJECT WILL  
STRENGTHEN THE COMMUNITY  
IN THREE LASTING WAYS:**

**1**

**Education & Workforce Development**

Providing free access to internet, technology, books, and programs for all, with resources that build literacy, digital skills, and job readiness for every age.

**2**

**Community Gathering & Engagement**

Offering welcoming spaces for families, students, and organizations to connect, collaborate, and celebrate together.

**3**

**Economic & Cultural Vitality**

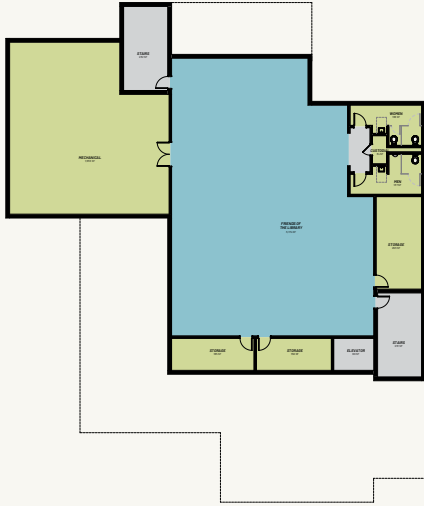
Attracting new partnerships, supporting local initiatives like the Iron Horse Creative District, and serving as a hub that reflects and uplifts the spirit of Holdrege.

---

**A new library will offer a modern, versatile space designed to meet today's needs and welcome generations to come.**

---

## BASEMENT



## FIRST FLOOR



## SECOND FLOOR



## THIRD FLOOR



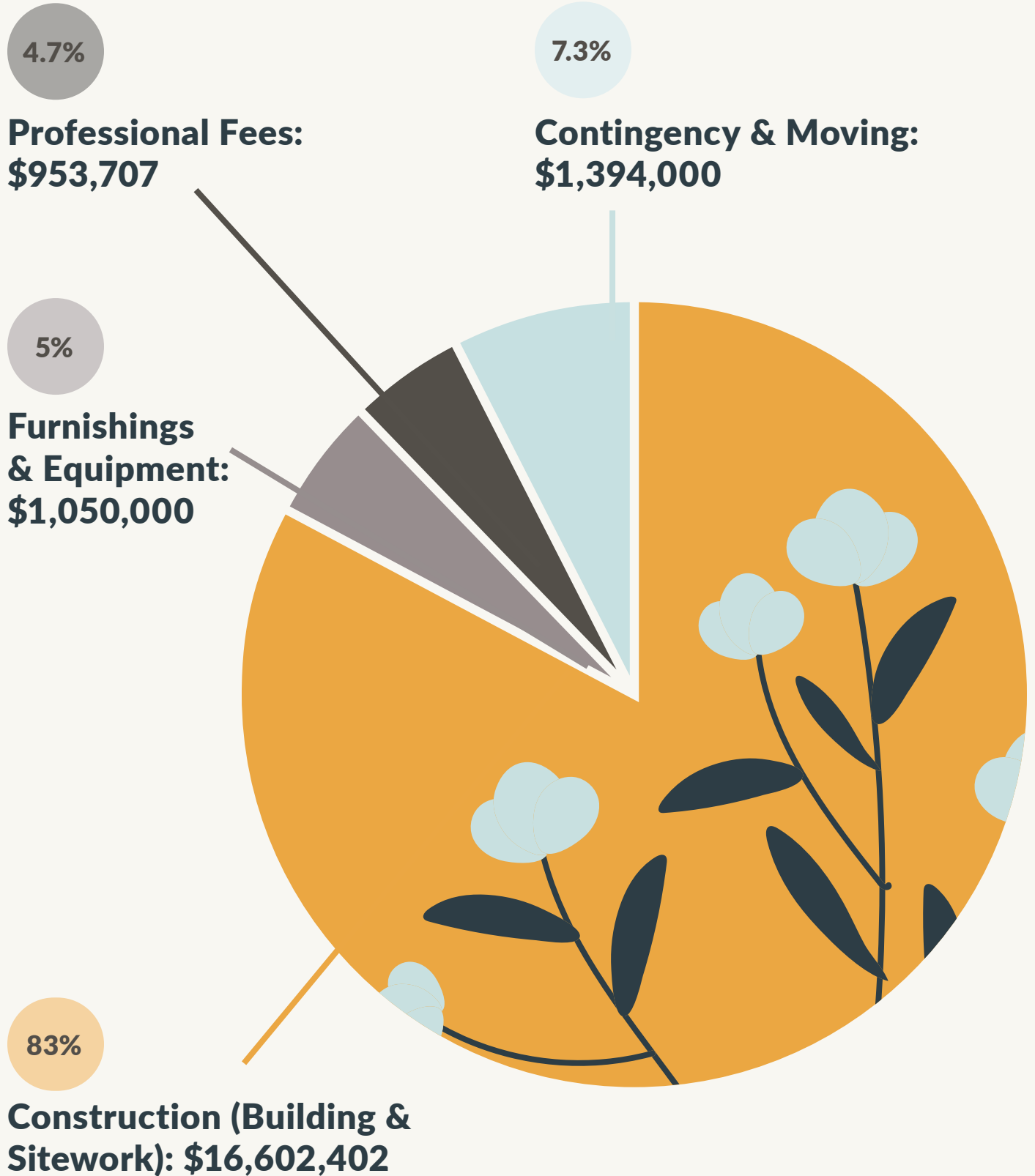
---

The new, expanded building will continue to host a variety of activities and programs for adults and families, serving as a true community hub.

---



# TOTAL ESTIMATED PROJECT COST: \$20,000,000



This major capital campaign project requires removing two structures—the current library building and a house located behind it—before construction of the new library can begin. The City of Holdrege will auction the house with no minimum bid, giving the winning bidder 160 days to relocate it. If no one bids, the house will be demolished to make way for the new library.

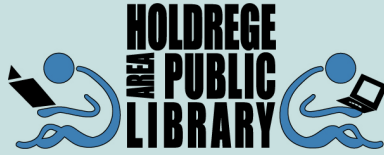
The lot totals 37,922 square feet. The ground floor will cover 11,025 square feet, with an additional 1,530 square yards designated for landscaping.



# MORE THAN A BUILDING

Together, we're building the foundation for continued growth and expansion, creating library spaces that will serve and inspire our community for generations to come.





# HOLDREGE AREA PUBLIC LIBRARY

**604 East Avenue, Holdrege, Nebraska**

## HOURS:

Monday-Thursday: 10:00 AM - 8:00PM

Friday & Saturday: 10:00 AM - 5:00 PM

Closed Sunday

TEL: 308-995-6556

FAX: 308-995-5732

WEBSITE: <https://holdregelibrary.org>

## CONTACT:

Sierra Burrows, Director

308-995-6556

[director@holdregelibrary.org](mailto:director@holdregelibrary.org)

